

We at **LightBUILD Technologies** offer our knowledge and specially designed equipment and on-site technical support to all forms of business in South Africa who would like to use our techniques to manufacture products or offer services using Lightweight Cellular Concrete technology.

Foamed Concrete Manufacturing Plants

MFCP -15 – Mobile Lightweight Concrete plant.
 Include **1 x 150l** high-speed vortical concrete mixer, worm pump, foam generating unit, in-line mixer, foam generator and control unit.
 Production capacity – up to 9 m³ of foamed concrete per hour.
 Output densities – from 100 to 1400 kg/m³
 Supply voltage – **380V**. Power consumption – 14 kW/h. Operation staff – 7.

Price: from R440,000.00 excl. VAT

set



MFCP -25 – Mobile Lightweight Concrete plant.
 Include **2 x 150l** high-speed vortical concrete mixer, worm pump, foam generating unit, porosifier and control unit.
 Output densities – from 100 to 1400 kg/m³
 Supply voltage – **380V**. Power consumption – 20 kW/h. Operation staff – 8.

Price: from R560,000.00 excl. VAT

set

Progressive Cavity (Worm) Pump

Electric driven WORM PUMP

It is suitable for a variety of material such as cements suspensions, ground coat plasters and insulating plasters, rough coat and textured plasters, trowel plaster, adhesive bonded joint, masonry mortar, refractory mortar, sealing suspensions, injection mortar, filling and anchoring mortar, dispersion plaster, fiber mortar, fibreglass concrete, bonding mortar, stucco and grouts.

It can be used for exterior plaster (lime, lime cement and insulating plaster) as well as interior plaster (lime plaster).

Supply voltage – **380V**, adjustable delivery rate, 200l hopper

Price: from R160,000.00 excl. VAT, unit

pc



Foam generating Equipment

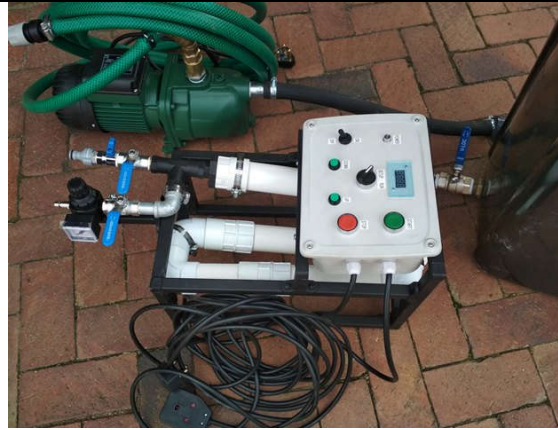
FOAM MASTER – the foam generating unit to manufacture light density foam used to produce cellular foamed concrete

Built in timer ensures the consistent production of cellular concrete of specified density. The conventional drum concrete mixer, Fiori mixer, and truck mixers can be used to mix concrete slurry with pre-manufactured foam. You can effectively produce any density of lightweight concrete from 600kg/m³ up to 1800kg/m³.

Set includes: Foam Master unit with control, water pump, supplying bin, all fittings, cables and hoses.

Price: R42,000.00 excl. VAT, per set

set



Foaming Agent

Foaming Concentrate “Bio-Froth”

We are the leading manufacturers of protein based foaming agent in South Africa, specially formulated to be used in the production and manufacture of foam concrete.

Firm liquid film, good mechanical strength.

The foam doesn't appear or fall down for high-pressure pumping up to 50 meters.

Manufactured in South Africa.

Available in 25l, 200l and 1000l containers

Please contact us for the latest price

pc



For more information regarding our business, products and services or business opportunities we offer please contact Mr. Paul Drozdov on (c) +27 82 828 6349, or email pauld@lightbuild.co.za